



Columbus Technical Societies

Meeting Notice

Speaker: Stan Ream, EWI

When: Thursday Sept 25th

6:00 Social Time, 6:30 Dinner, 7:15 Presentation

Dinner Cost: \$20 for members (student discounts available)

Where: Arlington Banquets
1976 Henderson Rd.
Columbus, OH 43220

Topic: "High-Speed Laser Welding of Fuel Cell Materials"

Abstract: With the increasing need for clean energy, fuel cells are becoming an attractive answer for multiple applications. To efficiently manufacture fuel cells on a scale appropriate for this rising need, large quantities of bi-polar plates must be hermetically welded at rapid travel speeds with almost no tolerance for defects. With fundamental-mode fiber lasers and precision high-speed motion, this unique challenge can be addressed.

Biography: Mr. Ream is a pioneer in the development of laser materials processing technologies. Starting in the '70s with his participation in high-power laser welding development for the Air Force, Navy, and NASA, Mr. Ream has continued to contribute to a broad range of laser applications and production implementations. Through his previous diverse employment experiences, including Sciaky Bros., AVCO Everett Research Laboratories, IIT Research Institute, Battelle, Amada, GE Fanuc, and Worthington Industries (TWB), and Edison Welding Institute, Mr. Ream has gained a broad perspective on the technological and marketing forces that have shaped the laser materials processing world. Mr. Ream holds nine patents in laser and electron beam technologies.

Please make your reservations by Sept 22nd

via our new web system:

<http://com-dot.com/newap/activities.php?d=114458&v=411>

or by calling Kevin Clear (614) 688-5243

Meetings at a Glance:

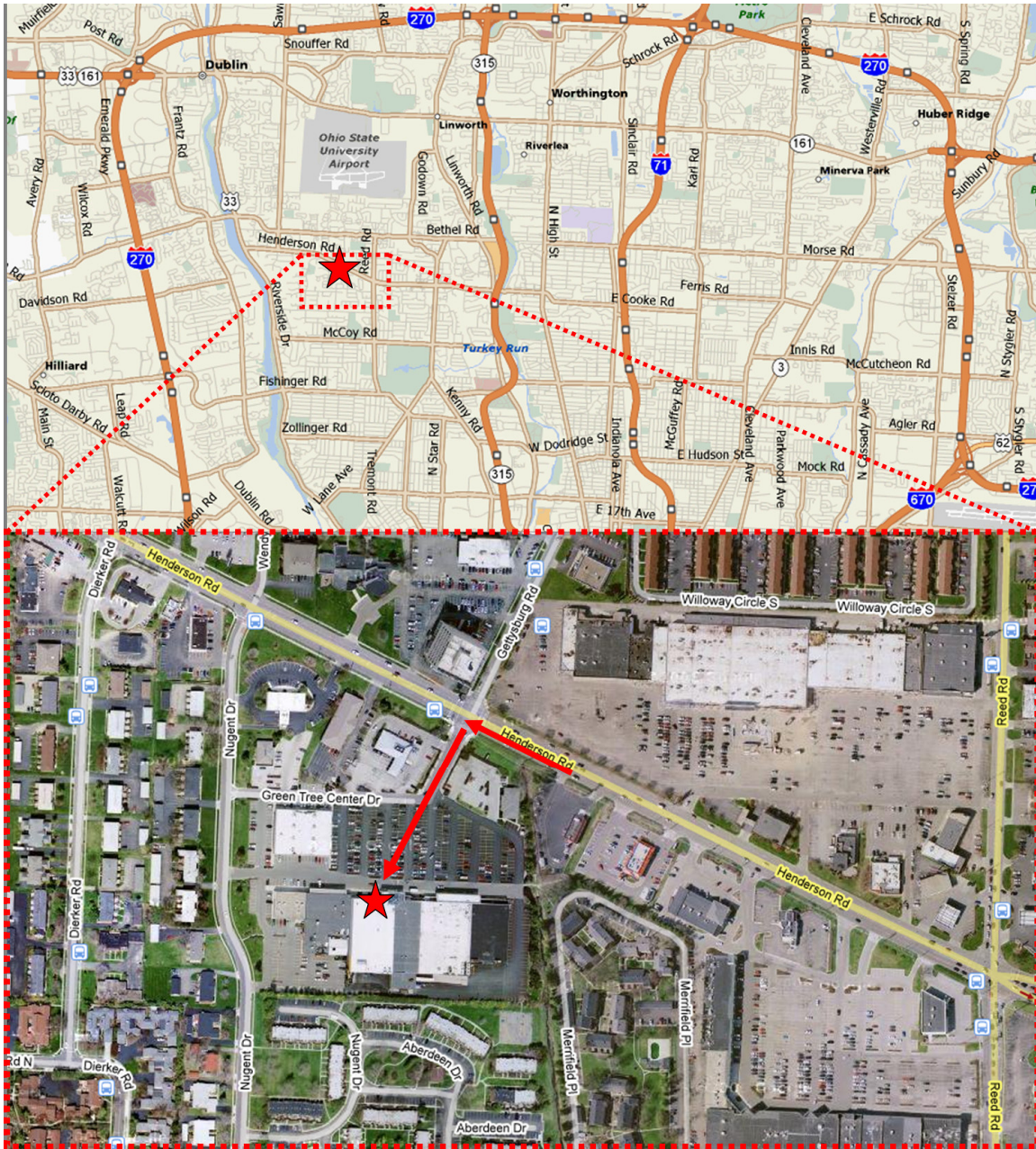
Mark your calendar

Oct 16th, 2008 Tour of CC Technologies
Nov 19th, 2008 Joint Meeting (ASM)

Check your monthly flyer for meeting details and location for each Section Meeting.

Arlington Banquets Location

1976 Henderson Road
Columbus, OH 43220



Arlington Banquets is located in Upper Arlington about 2 miles West of Route 315, about 1.7 miles East of Riverside Drive, and about 1.2 miles East of Sawmill Road.

It is located in the same shopping center as Kroger at the intersection of Henderson Road and Gettysburg Road. There is ample parking in the front as well as on the sides and rear of the complex next to the adjoining bars, Arlington Café and Cazzie's.